



THE LOUPE LIGHT



The loupe light in brass | honey

DESCRIPTION

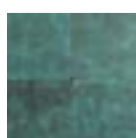
A large and serene blown glass wall light.

The loupe light complements and punctuates the architecture of indoor and outdoor spaces, and adds a confident and exciting element that nonetheless leaves the design direction wide open.

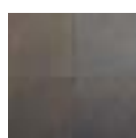
FINISHES

The recommended finishes for The loupe lights are below. To see all options visit our [finish library](#)

Our handmade samples are available at £20 + vat each including delivery.



brass | verdigris



brass | dry bronze



brass | honey



brass | chocolate



THE LOUPE LIGHT



IMAGE GALLERY

For more images of the loupe light please visit the image gallery on our [website](#).

VIEW IN YOUR SPACE

It's coming...we're just working on the finishing touches.

PRICING GUIDE

Prices quoted exclude vat. Trade discounts are available.

Weight: 4.25 kg.

brass | verdigris
£2,450 + vat

brass | dry bronze
£2,450 + vat

brass | honey
£2,450 + vat

brass | chocolate
£2,450 + vat

SHIPPING GUIDE

Indicative pricing for a loupe light at 381mm x 177mm x 372mm. For more information visit our [how we ship](#) page.

UK:	£150
US EAST COAST:	£895
US WEST COAST:	£895
EUROPE:	£895
REST OF WORLD:	£995+

POINTS TO NOTE

Lead time: 10 weeks

Our hand-finished, natural materials vary richly in pattern and colour. For a complete picture, please view the [loupe light](#) imagery on our site alongside the corresponding sample in our [finish library](#).

For more information please visit our [website](#) or contact us at enquiries@matthewcox.com.